



Center for Mental Health Services Research

GEORGE WARREN BROWN
SCHOOL OF SOCIAL WORK

 Washington University in St. Louis

Advancing the Conceptual, Empirical, and Methodological State of Outcomes for Implementation Science

Enola Proctor, Greg Aarons, Peter Hovmand,
Ramesh Raghavan, and Richard Griffey

**3rd NIH Conference on the Science of Dissemination and
Implementation: American Academy of Health Behavior's
Tenth Annual Scientific Meeting
Clearwater, Florida February 7-10, 2010**





Funding support:

- Center for Mental Health Services Research, NIMH
“Advanced” Center with focus on implementation science, 5
P30 MH068579
- Institute for Clinical and Translational Science, ICTS
5UL1RR024992-02
- Implementation Research Institute, R25 MH080916-03



Evidence based health care requires multiple strategies

- Health behavior change strategies:
evidence based treatments, programs, services
- Strategies to disseminate evidence based care
- **Strategies to implement evidence-based care**

I N S T I T U T E O F M E D I C I N E



CROSSING THE
QUALITY CHASM

A New Health System for the 21st Century

Definitions of Implementation Research

*(study of) “...the utilization of strategies or approaches to introduce or modify evidence-based interventions within specific settings. This involves the identification of and assistance in **overcoming barriers to, the application of new knowledge** obtained from a disseminated message or program”*

*

* Lomas, 1993

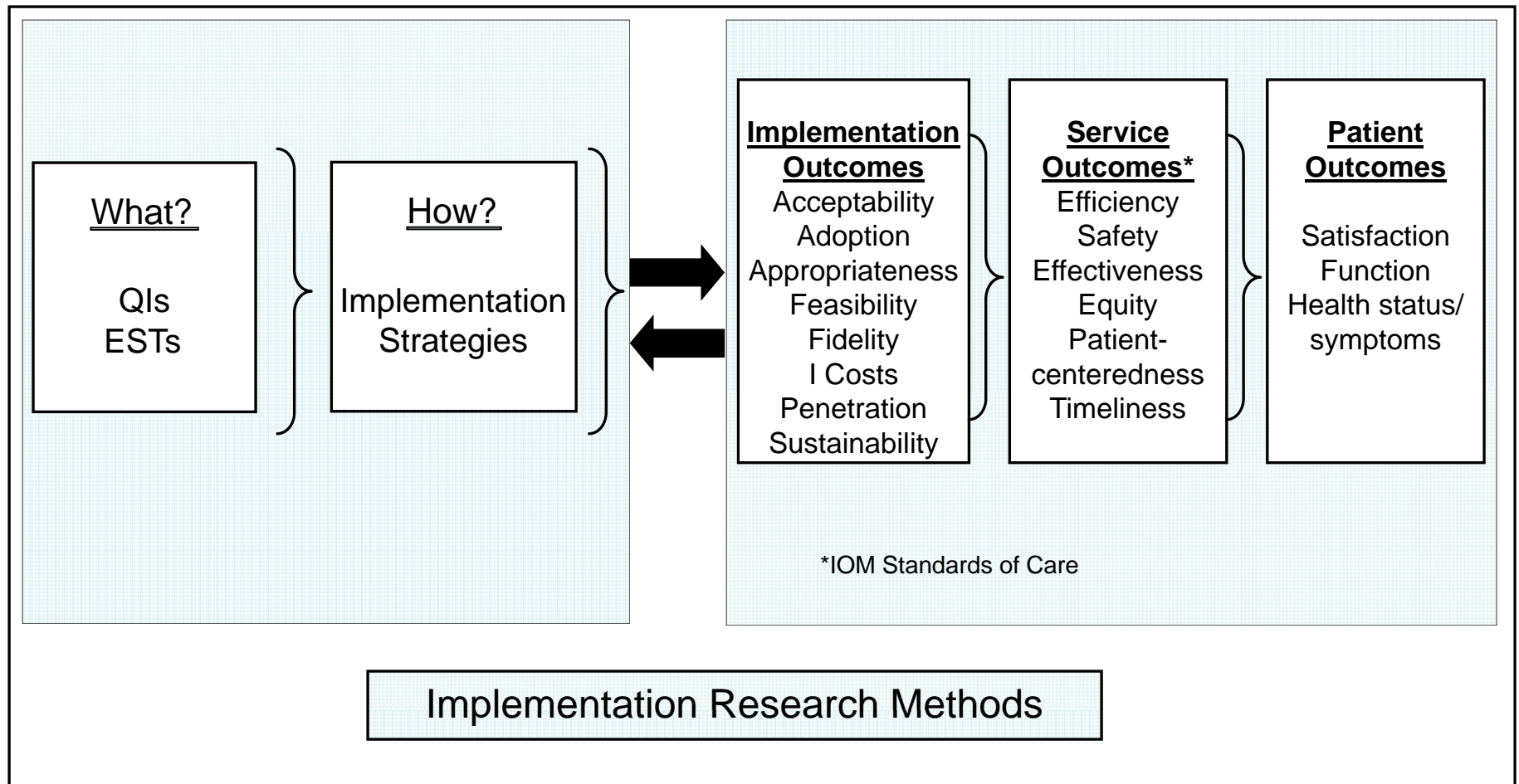


Key components for focus in IR

- Implementation strategies
- Implementation outcomes
- Multiple stakeholders, reflecting context and process of improving care



Conceptual Model for Implementation Research





Value-added of conceptual model

- Distinguishes processes and outcomes
- Two process technologies:
 - EST's
 - Implementation strategies
- Outcome distinctions
 - Implementation outcomes versus service & client outcomes
 - Types of implementation outcomes



Implementation strategies

- Preponderance of descriptive research:
 - Identifying barriers to implementation
 - Observations of “usual” care in changing practice (naturalistic spread, implementation)
- Need to derive strategies for implementation
 - from theory
 - from descriptive studies



Key components for focus in IR

**Implementation
outcomes**



Implementation outcomes

How to conceptualize and measure success of implementation processes?

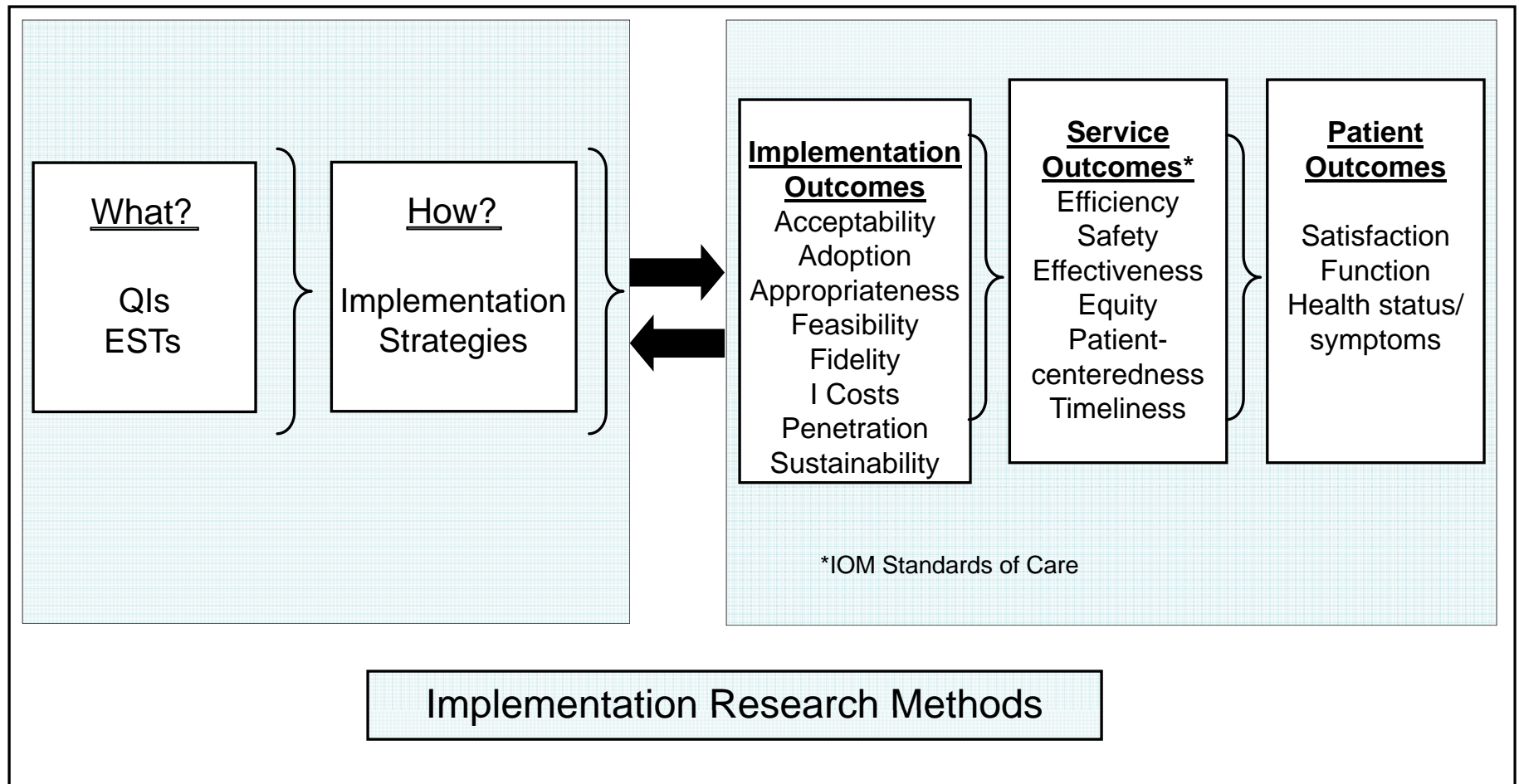
- NIH PA 010-40: invites studies that will accurately assess the outcomes of dissemination and implementation efforts.

Outcomes are distinct from clinical outcomes

- Could have an effective intervention, poorly implemented
- Could have an ineffective treatment, successfully implemented



Conceptual Model for Implementation Research





Implementation outcomes

- Unresolved issue:
 - How to conceptualize and measure the success of implementation
- Implementation outcomes are distinct:
 - Are NOT clinical outcomes



Implementation outcomes: state of art

- **Overlapping concepts**
- **Inconsistent terminology**
- **Literature: Scattered across health and behavioral health fields**



Implementation outcomes: key concepts

- Acceptability
- Adoption
- Appropriateness
- Feasibility
- Fidelity
- Implementation cost
- Penetration
- Sustainability



Implementation Outcomes: Research agenda

- Advancing consistency of terminology
- Advancing measurement
- Mapping inter-relationships among implementation outcomes
- Testing salience to stakeholders
- Testing salience over implementation process
- As outcomes for tests of implementation strategies



IR: multiple stakeholders

- service consumers
- families
- providers
- administrators
- funders
- legislators



**Break out discussions:
questions and challenges**



Contact & Disclosure: Enola Proctor

Enola Proctor, Director, CMHSR

314-935-6660

ekp@wustl.edu

No relevant financial interests to disclose